



# Valentus Compensation Plan

Valentus launched the ultimate compensation plan with a profit structure unparalleled by any pay plan in the direct marketing industry. Four top pay plan experts got together and equipped Valentus with 7 POWER BONUSES that can help you achieve the lifestyle of your dreams faster than was ever possible before.

V  
A  
L  
E  
N  
T  
U  
S  
  
P  
L  
A  
N

- 1) RETAIL COMMISSIONS 25%
- 2) FAST START BONUS Up to \$100(USD)
- 3) LEGACY CODED BONUS \$100(USD)  
Unblocked to Unlimited Levels
- 4) DUAL TEAM COMMISSIONS Up To  
\$100,000(USD) Per Week
- 5) DUAL TEAM MATCHING BONUS Seven  
Levels Starting at 20%
- 6) 1% GLOBAL VOLUME SHARED  
ENROLLMENT POOL
- 7) VEHICLE BONUS  
\$400 to \$3,000(USD) Monthly

 **10k**  
Per Month Faster  
Than Any Plan!

**Web Site/Back Office - \$20.00 (USD) one-time activation fee. No annual fee.**

## Product Packs

Packages	Cost (USD)	Qualifying Business Volume (BV)	Leadership Rank Benefit
<b>Basic</b>	1 box - \$59.95	50BV	Qualified as an <b>Independent Representative (IR)</b> .
<b>Starter</b>	3 boxes \$145.95	100BV	Qualified as a <b>Gold IR</b> for the remainder of the month you join, PLUS the entire following month.
<b>Advanced</b>	6 boxes \$239.95	150BV	Qualified as a <b>Platinum IR</b> for the remainder of the month you join, PLUS the entire following month.
<b>Business Builder</b>	16 boxes \$575.95	400BV	<b>NOT E</b> : Automatically qualified as a <b>Ruby IR</b> , if you fulfill 100BV no later than the last day of the following month. Maintain a 100BV for 6 consecutive months, or a 150BV for 3 consecutive months, after which you will be automatically promoted as qualified <b>Emerald IR</b> .
<b>Career Success</b>	36 boxes \$1199.95	800BV	<b>NOT E</b> : Automatically qualified as an <b>Emerald IR</b> . <b>No activation fee.</b>

### 1. Retail Commissions

All orders from your web site link count as personal BV towards your monthly requirement for commissions. To earn retail commissions you must maintain a minimum of 50BV personal volume each month

### Valentus Preferred Customer Loyalty Reward Program

Preferred customers purchase at wholesale. If they refer TWO Preferred Customers who set up and each purchase (product value equal to or greater than their own auto-delivery option), then the referring Preferred Customer's next month's scheduled order will be FREE (not including shipping costs and any applicable sales taxes charged to the Preferred Customer). Contact Support: [Support@Valentus.com](mailto:Support@Valentus.com) with Orders and Account information.

### 2. Fast Start (First Order) Bonus - Paid Weekly

Packages	Cost (USD)	Qualifying BV	Fast Start Bonus	Legacy Bonus	Dual Team BV Allocation
<b>Basic</b>	1 box \$59.95	50BV	\$20	n/a	20BV
<b>Starter</b>	3 boxes \$145.95	100BV	\$40	n/a	40BV
<b>Advanced</b>	6 boxes \$239.95	150BV	\$60	n/a	60BV
<b>Business Builder</b>	16 boxes \$575.95	400BV	\$100	\$100	100BV
<b>Career Success</b>	36 boxes \$1199.95	800BV	\$200	\$100	100BV

If your First Order (Enrollment Order) is the Basic, Starter or Advanced Pack, you will qualify for the respective bonus listed in the above chart. Purchases after the first purchase are commissionable under the Fast Start Bonus. No additional FSB's apply to subsequent orders of the Basic, Starter, Advanced....With the exception of the Business Builder or the Career Success Pack.

To advance ranks, through purchasing, you will be required to purchase the Business Builder or Career Success Pack.

**Business Builder Pack (BBP) Career Success Pack (CSP):**

A \$100/\$200 Fast Start bonus is paid out on the first Business Builder/Career Success Pack purchased on an account. Once the \$100 is paid out, no other Fast Start Bonus' are paid out on an account. \* No time-frame.

**Multi-Packs:**

A Multi-Pack Fast Start Bonus is paid out "one-time" for any multi-pack...when the multi-pack is the "first order" on the account.

Basic = \$20

Starter = \$40

Advanced = \$60

**Scenario A:**

1st Order: Basic \$20

2nd Order: Basic \$0

3rd Order: Advanced \$0

4th Order: CSP \$200 or BBP \$100 (Done)

**Scenario B:**

1st Order: BBP \$100 / CSP \$200 (Done)

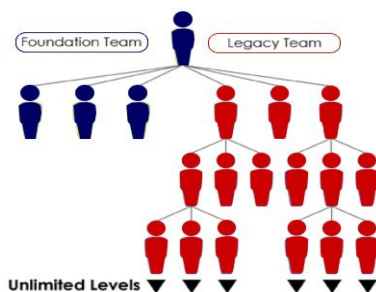
2nd Order: Basic \$0

**3. Legacy-Coded Qualification Bonus - \$100.00/\$200.00 (USD) Paid Weekly**

Your first THREE personally enrolled IR's:

~ Who are qualified Ruby/Emerald IR's become your Foundation Team

~ Pay a \$100 Legacy-Coded Bonus to your first generation upline enroller who is a Legacy Qualified, Ruby or Emerald IR, and who maintains an active monthly volume of 100BV.



**Qualification:**

- ~ You have successfully built your Foundation Team,
- ~ You are a qualified Ruby or above,
- ~ Maintain 100BV monthly
- ~ Starting with your FOURTH (personal) qualified Ruby/Emerald IR...you receive the \$100/\$200 Legacy Qualification Bonus for each enrollee....the enrollee is "Legacy-Coded" to you.

**Subsequently and UNLIMITED**

You receive the first three qualified Ruby or Emerald IR's from each enrollee of your "Legacy-Coded" Reps, who in turn are coded to you, as are their first 3, and so on...UNLIMITED.

**4. Dual Team Cycle Commissions - \$20.00 (USD) Per Cycle Paid Weekly**

The Fast Start (First Order) Bonuses and Legacy Qualification Bonuses are paid out first before any BV is calculated in the Dual Team Cycle Commissions structure. The chart below shows the amount of BV from each of the Product Packages that is calculated in the Dual Team Commission Structure.

Packages	Dual Team BV Allocation (First Order Only)	Dual Team BV Allocation (Additional Orders)
<b>Basic</b>	<b>20BV</b>	<b>50BV</b>
<b>Starter</b>	<b>40BV</b>	<b>100BV</b>
<b>Advanced</b>	<b>60BV</b>	<b>150BV</b>
<b>Business Builder</b>	<b>100BV</b>	<b>400BV</b>
<b>Career Success</b>	<b>100BV</b>	<b>500BV</b>

**Additional** Product Packages/orders purchased after the First Order are calculated in the Dual Team Commissions Structure using 100% of the BV value.

**Qualification:**

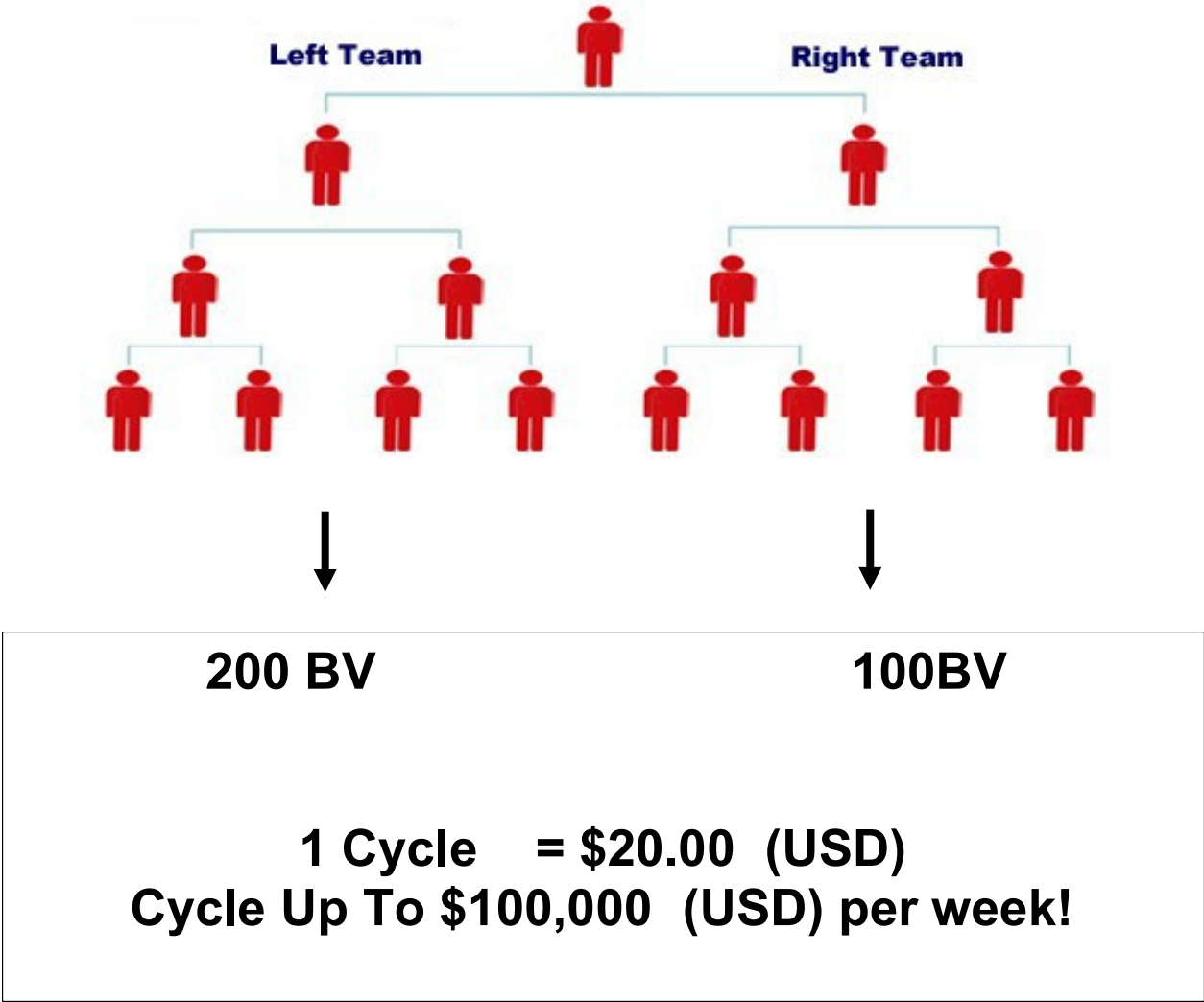
To qualify for Dual Team Cycle Commissions, requires 100BV (Personal) or greater and sponsor a minimum of two (2) IR's – one placed on the left team and one placed on the right team – who each produce 50BV or greater. If you do not satisfy the Dual Team Commissions qualification, but maintain a minimum 50BV, the computer will automatically accumulate and store unpaid sales volumes in your team(s) for future commissions calculations (upon qualification).

Each week that you qualify to cycle, all of the volume in your lesser leg matches your strong leg (100 to 200). The Volume for all available cycles is deducted. Next, your rank determines the maximum number cycles you can be paid on each week, and the income of each cycle. If there

are more cycles worth of Volume on your account than your rank's cycle cap, the Volume for ALL cycles is deducted, and you will be paid on your rank's cycle cap. Any remaining Volume will be carried over to the next pay period.

**RANK CYCLE CAPS**

Each week you cycle, your lesser leg matches your strong leg (100 to 200). All of the Volume for all of the cycles available on your account is deducted. If your account has the Volume for more cycles than your rank's cycle cap, you will be paid on your rank's maximum number of cycles, but the Volume for all cycles will be deducted. Any remaining volume will carry over to the next pay period.



## Rank Achievement Requirements

Leadership Rank Independent Representative (IR)	Monthly BV Required	Minimum # of Personally Enrolled Rank IR's	Minimum Monthly Total BV Lesser Leg	Minimum Monthly Enroller Tree BV in EACH TEAM Leg	Monthly BV Auto-Delivery Option
Silver	<b>50BV</b>	2 IR's at 50BV	n/a	50	n/a
Gold	<b>100BV</b>	2 Silvers	500	50	100BV
Platinum	<b>100BV</b>	2 Golds	1,000	100	100BV
Ruby	<b>100BV</b>	2 Platinums	2,000	200	100BV
Emerald	<b>100BV</b>	3 Rubies	5,000	500	100BV
Diamond	<b>100BV</b>	3 Emeralds	15,000	1,500	100BV
Double Diamond	<b>100BV</b>	2 Emeralds & 1 Diamond	30,000	3,000	100BV
Triple Diamond	<b>100BV</b>	1 Emerald & 2 Diamonds	100,000	10,000	100BV
Blue Diamond	<b>100BV</b>	3 Diamonds	250,000	25,000	100BV
Royal Diamond	<b>100BV</b>	4 Diamonds	500,000	50,000	100BV
Black Diamond	<b>100BV</b>	4 Diamonds	750,000	75,000	100BV
Crown Diamond	<b>100BV</b>	4 Diamonds	1,000,000	100,000	100BV
Crown Ambassador	<b>100BV</b>	4 Diamonds	1,500,000	150,000	100BV

**As an Example:** Diamond qualification = 100 Personal Business Volume, 3 personally enrolled Emeralds, 15,000+ BV in both legs of which 10% of the BV in each leg needs to be connected Enrollment Tree Business Volume.

## Dual Team Commissions, Maximum Cycle Earnings, Maximum Match Earnings and Car Bonus

Rank	Dual Team Income Cycle Value	Maximum # of Dual Team Cycles per week	Maximum Dual Team Cycle Commissions per week (USD)	Maximum Dual Team Match Bonus Commissions per week (USD)	Maximum Monthly Car Bonus (USD)
Silver	\$5	5	\$25	\$50	n/a
Gold	\$10	10	\$100	\$100	n/a
Platinum	\$10	20	\$200	\$250	n/a
Ruby	\$20	20	\$400	\$500	n/a
Emerald	\$20	50	\$1,000	\$1,000	n/a
Diamond	\$20	100	\$2,000	Unlimited	\$400
Double Diamond	\$20	200	\$4,000	Unlimited	\$800
Triple Diamond	\$20	400	\$8,000	Unlimited	\$1,000
Blue Diamond	\$20	800	\$16,000	Unlimited	\$1,500
Royal Diamond	\$20	1,600	\$32,000	Unlimited	\$2,000
Black Diamond	\$20	2,400	\$48,000	Unlimited	\$2,000
Crown Diamond	\$20	3,500	\$70,000	Unlimited	\$3,000
Crown Ambassador	\$20	5,000	\$100,000	Unlimited	\$3,000

## 5. SEVEN Levels Dual Team Matching Bonuses - Paid Weekly

This bonus is earned on the Dual Team Cycle Commissions earnings of all IR's in your personal enrollment tree, unlimited.

### Qualification:

~ Maintain 100BV monthly

Level	Silver	Gold	Platinum	Ruby	Emerald	Diamond	Blue Diamond	Crown Diamond
1	10%	15%	15%	20%	20%	20%	20%	20%
2			10%	10%	15%	15%	15%	15%
3				5%	10%	10%	10%	10%
4				3%	5%	5%	5%	5%
5					3%	3%	3%	3%
6							3%	3%
7								2%

## 6. Enrollment Pool Bonus - Paid Monthly

### Qualification:

- ~ Personally sponsor AND qualify (PS&Q) 3 new Ruby/Emerald IR's in the SAME calendar month,
- ~ Personally produce 100BV for the same calendar month,
- ~ Qualifies One (1) Share in the 1% Enrollment Pool.

Share values will be determined by dividing the total number of all qualified IR's that have PS&Q at least 3 new Ruby or Emerald IR's in the same qualifying month. The more sets of three (3) PS&Q Ruby or Emerald IR's you produce, the more shares you earn (ex: 6 PS&Q Ruby IR's in one calendar month equals 2 shares in the pool; 9 PS&Q Ruby or Emerald IR's equals 3 shares, etc.) This bonus is calculated separately on each calendar month, and is paid by the 10<sup>th</sup> of the following month.

A \$575 Business Builder Pack or \$1199 Career Success Pack enrollment counts towards one of the three PS&Q Ruby or Emerald IR's required to get one share within this pool ONLY, when an IR orders a Business Builder Pack or a Career Success Pack as their **first order**. Upgrades to a Business Builder Pack or a Career Success Pack and/or Loyalty BV retail sales exceeding 400BV in future orders do not count towards earning a share in the Enrollment Bonus Pool, unless those purchases are made in the same enrollment month.



## **7. Vehicle Bonus - Paid Monthly**

The Car Bonus is earned beginning at the rank of Diamond, and continues for ranks above, and is paid to the qualified IR beginning after two consecutive months of maintaining this status. For example, if you become a fully qualified Diamond in the month of April, and maintain the qualified rank of Diamond for the month of May, you will receive your first Car Bonus in the month of June. Cars must be 2years old or newer.

## **Monthly BV Production Requirements**

To earn certain bonuses in the Valentus compensation plan, a Valentus IR is required to personally produce a minimum amount of monthly business volume (BV), either through personal business volume, and/or selling product(s) through the Valentus IR website to a retail customer(s).

An equivalent (or greater) amount of Valentus product BV under the IR's personal account is required to be achieved and maintained on a calendar month basis, in order to receive the corresponding commissionable entitlements:

1. 50BV per calendar month is required to earn monthly Retail Commissions.
2. 50BV per calendar month is required to earn the Fast Start (First Order) Bonus on all personally enrolled Basic, Starter and Advanced Packages. 100BV is required to earn Fast Start (First Order) Bonus on all personally enrolled Business Builder and Career Success Packages.
3. 100BV per calendar month is required to earn the Legacy Qualification Bonus.
4. 100BV per calendar month is required to earn Dual Team Cycle Commissions for Gold IR's and above.
5. 100BV per calendar month required to earn Dual Team Matching Bonus.
6. 100BV per calendar month is required to earn Enrollment Pool Bonus.
7. 100BV per calendar month is required to earn Vehicle Bonus.

## **Bonus Schedule**

Weekly bonuses are paid every Friday, based on the sales of the previous week. Monthly bonuses are paid on the 10th of the following month, based on the sales of the previous month.

## **Flushing**

This is a non-flushing dual team plan. Any unused BV that was not eligible for qualification or used to calculate Dual Team Commissions will continue to accumulate in your left and right teams, and will be used in future sales cycles when the accumulation BV amounts and Dual Team qualifications are achieved. Unused BV that is retained in your left and right teams that has not been utilized after 12 months of inactivity may be subject to a flushing revision, at Valentus Inc.'s discretion.

## **Rank Advancement**

Any rank you achieve in a given week will be activated and paid according to that rank the following week. Any unqualified rank, beginning from the rank of Diamond IR or above, who may have lost their active weekly or monthly Diamond IR or above qualification, will be granted a grace period of 30 days in order to re-qualify and retain their Diamond IR or above rank benefits.

## **Disclaimer**

Valentus is a direct-to-consumer organization that designs, manufactures and markets exclusive products. We don't believe in get rich quick programs. We believe in hard work, dedication, adding value and serving others. As stipulated by law, we cannot and do not make any guarantees about your ability to get results or earn any money with our ideas, information, tools, compensation systems or strategies. We don't know you and, besides, your results in business are up to you and solely determined by your efforts, resources, connections, dedication and application. Nothing in this document or any of our websites is a promise or guarantee of results or future earnings, and we do not offer any legal, medical, tax or other professional advice. Any financial numbers referenced here, or on any of our websites, are simply of an educational nature describing how our programs work and should not be considered exact, actual or as a promise of potential earnings. All numbers are illustrative only. For any concerns beyond the scope of this document, we recommend you seek professional advice.